

EXPLANATORY

- The range of parts in this List covers all serviceable components on model/models to the standard specification. Where the part is confined to one specification this is clearly defined in the Description or Remarks column.
- This list is divided into Groups, each consisting of a major unit fitted to the vehicle. A Group index followed by a more detailed Alphabetical and Part Number Index is provided after the preface pages. Where practicable these indexes will be revised with each issue of revised pages.
- Items comprising an assembly (or sub-assembly) are inset for easy reference. This principle is followed in all Parts Lists, typical examples being given below.

Examples :

CRANKSHAFT ASSEMBLY.....AMK 2254
 PlugAMK 97

PANEL ASSEMBLY—REAR LOWER CZA 418
 Angle—attachment—rear bumper CZA 146
 Bracket—rear bumper support..... CZA 164

- The word 'Quantity' as shown in the heading of all text pages is intended to convey that all figures appearing in that column are quantities used on a particular application and not quantities used per vehicle.
- The assemblies and components in the illustrations are identified by numbers which correspond with the illustration references appearing in the first column of the facing text page. A circle embracing certain components is used to give a magnified view of the items which are too small to show up in detail if illustrated on the same scale as the other parts on the plate.
- Standard abbreviations are employed. Details of these are shown at the foot of each page on which they appear.
- To locate a part it is essential first to identify the item against the illustration by use of the Group, Section or Alphabetical Indexes and then to establish the illustration reference number. The correct part number and official description appears against the corresponding illustration reference number on the adjacent page. Any Engine, Car, Commission Numbers, etc., should however be taken into account.
- Amendments to this List will be effected by means of Revised Pages. Should it be necessary to add an additional page or pages to interrupt the existing sequence of page numbers, the added pages will be numbered as in the following examples, which illustrate what would happen if it became necessary to extend the information on a text page beyond the limits of that page. Use of the decimal notation avoids the necessity of re-numbering and reprinting all pages in any section after the newly introduced page.

Example :

Existing page sequence :

A1 (illustration), A2 (text), A3 (illustration), A4 (text).

If page A2 had to be extended onto another page the sequence would be: A1 (illustration), A2 (text), A2.1 (illustration), A2.2 (text), etc.

- Each circulation of revised pages will be issued under a cover page. This cover page will always appear as the first page and will, in addition to indicating the circulation number, show all part numbers with their page reference that are new and additional to this List.
- Where information on a page has been revised this is shown by the inclusion of a dagger †, indicating what has been revised at that time.
- As revised pages are issued a complete index showing all the pages/plates, with their latest issue, now comprising this Service Parts List will be added to the List and reprinted with each circulation of revised pages.

IMPORTANT



Austin Morris Group Service and KD Division

BRITISH LEYLAND UK LIMITED

Replacement parts that are not of genuine British Leyland manufacture cannot be relied upon to be of British Leyland specification, material, and workmanship, and therefore British Leyland cannot be expected to extend their Warranty to vehicles which have been fitted with parts not of their manufacture.

British Leyland reserve the right to make changes or improvements in the construction or equipment of their products at any time.

In order to ensure prompt and correct execution of your orders it is essential to quote:

1. The relative **Unit Number**, together with prefixes, suffixes, and specification reference where applicable:

e.g.: Axle, Body, Cab, Car, Chassis, Commission Engine, and Gearbox Numbers, etc.

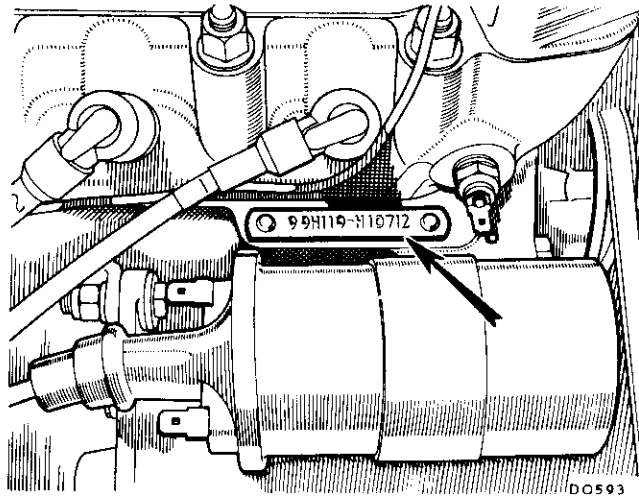
Main standard abbreviations used covering all Parts Lists:

(B) Body Number (C) Car number (CN) Commission number WB Wheelbase

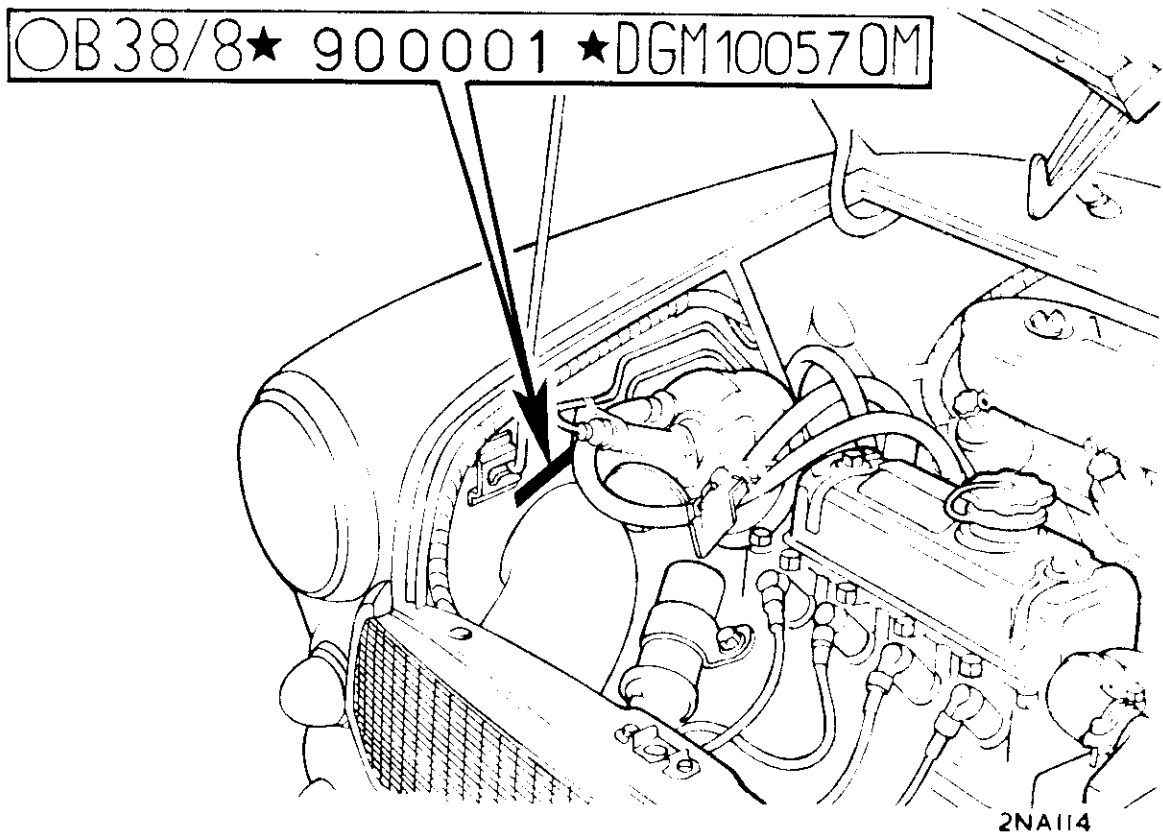
C Chassis number (CB) Cab number (E) Engine number

2. The **Part Number** and **description** (prefix letters to Part Numbers must always be quoted)
3. Always state the **colour** of carpets, painted items, trim items, etc.
4. The **quantity** required, bearing in mind that the quantities shown are those used in the application actually illustrated in the Parts List in question. Sometimes only minimum packaged quantities are available. These packs may well contain more parts than are required for a single job; for details of packaged quantities, see the Service Parts Price List.
5. The listing or illustrating of an item in this Parts List does not guarantee its availability.

LOCATION OF UNIT NUMBERS



The **Engine Number** is stamped on a plate secured to the cylinder block



The **Car Number** and **Body Number** are stamped on a plate secured to the right-hand front wheel panel valance in the engine bay

GROUP INDEX

Section	Description	Section	Description
A	Block—Cylinder and Pistons	AC	Propeller Shaft
B	Camshaft—Crankshaft—Timing Gear	AD	Piping—Hydraulic Brake
C	Cylinder Head and Valve Gear	AE	Hand brake System
D	Separator—Oil	AF	Servo—Brake
E	Pump—Oil and Dipper Rod	AG	Dynamo, Starter and Voltage Regulator
F	Cooler—Oil and Filter	AG1	Alternator
G	Pump—Water and Fan	AH	Lamps—Stop/Tail—Flashers—Horn
H	Manifolds, Engine Mounting and Exhaust Pipe	AJ	Lamps—Head
J	Accelerator Linkage and Cable	AK	Windscreen Wiper—Washer
K	Coil and Distributor	AL / AM	Instrument Panel
L	Radiator—Expansion Tank	AN	Wheels—Road
M	Tank—Fuel and Piping	AP	Sub-frame—Engine Mountings
N	Pump—Fuel	AQ	Body and Grille Panels
P	Carburetter	AR	Bonnet and Controls
Q	Filter—Air	AS	Boot Lid—Badge
R	Clutch—Flywheel	AT	Doors and Fittings
S	Master Cylinders—Pedals	AV	Windscreen—Windows
T	Casing—Transmission	AW	Bumpers—Grille and Finishers
V	Gearbox—Gear	AX	Trim Liners—Mirrors
W	Gear Change Mechanism—Housing	AY	Carpets—Felt
X	Differential	AZ	Plugs—Blanking
Y	Suspension—Rear	BA	Seats
Z	Brake System	BB	Heater
AA	Steering	BC	Ventilation
AB	Suspension—Front	BD	Tools

ALPHABETICAL INDEX

Description	Page No.	Description	Page No.	Description	Page No.
A		Cylinder—clutch master ..	S2	J	
Absorber—shock—front ..	AB2/4	Cylinder—clutch operating ..	S2	Jack—lifting ..	BD2
Absorber—shock—rear ..	Y2	Cylinder—head ..	C2	Jet—carburetter ..	P2
Adaptor—mounting plate ..	L2	Cylinder—wheel ..	Z2	K	
Air cleaner ..	Q2	D		Kit—ball pin—suspension ..	AB2
Alternator ..	AG8	Deflector ..	AT2	Kit—calliper repair ..	Z2
Ammeter ..	AM2	Demister—windscreen ..	BC2	Kit—master cylinders ..	S2
Arm—door check ..	AT2	Differential ..	X2/4	Kit—radius arm ..	Y2
Arm—radius ..	Y2	Distributor ..	K2	Kit—water pump ..	G2
Arm—steering ..	AB2	Doors ..	AT2	Kit—wheel cylinder ..	Z2
Arm—upper support ..	AB2	Drum—brake ..	Z2	L	
Arm—windscreen ..	AK2	Dynamo ..	AG2	Lamps—flasher—front ..	AJ2
Ashtray ..	AY2	E		Lamps—head ..	AJ2
B		Element—air cleaner ..	Q2	Lamps—stop/tail and flasher ..	AH2
Badge—boot lid ..	AS2	Element—oil filter ..	F2	Laygear ..	V4
Badge—grille ..	AW2	Exhaust pipe ..	H2	Layshaft ..	V4
Bag—tools ..	BD2	F		Lever—change speed ..	W2
Bar—bumper ..	AW2	Fan ..	G2	Lever—hand brake ..	AE2
Bearing—clutch release ..	R2	Felt—roof ..	AY2	Lid—boot ..	AS2
Bearing—connecting rod ..	B2	Filter—oil ..	F2	Liner—door ..	AX2
Bearing—crankshaft ..	B2	Finisher—companion box ..	AX2	Liner—rear quarter ..	AY2
Bearing—steering column ..	AA2	Finisher—parcel shelf ..	AX2	Liner—roof ..	AY2
Belt—fan ..	G2	Finisher—radiator grille ..	AW2	Link—dynamo adjusting ..	AG2
Blade—wiper ..	AK2	Finisher—waist ..	AT2	Lock—boot lid ..	AS2
Block—cylinder ..	A2	Flange—drive—differential ..	X2	Lock—door ..	AT4
Body panels ..	AQ2	Flange—driving—propeller shaft ..	AC2	M	
Bonnet ..	AR2	Flasher lamps—front ..	AJ2	Manifolds ..	H2
Box—fuse ..	AG2	Flasher lamps—rear ..	AH2	Mirror—interior ..	AX2
Bracket—brake and clutch ..	S2	Flywheel ..	R2	N	
Bracket—engine mounting ..	H4/8/12	Forks—change speed ..	V2	Needle—jet ..	P2
Bracket—extension ..	L2	Frame—sub ..	AP2	Nut—wheel ..	AN2
Brakes—front ..	Z2	Fusebox ..	AG2	P	
Brakes—rear ..	Z2	G		Pad—crash fascia ..	AX2
Bumpers ..	AW2	Gauge—fuel ..	AM2	Pad—pedals ..	S2
C		Gauge—oil ..	AM2	Panel—body ..	AQ2
Cable—accelerator ..	J2	Gauge—temperature ..	AM2	Panel—bonnet ..	AR2
Cable—battery ..	AG2	Gears—change speed ..	V2-4	Panel—boot lid ..	AS2
Cable—bonnet release ..	AR2	Gear—drive (62 teeth) ..	X2	Panel—roof ..	AQ2
Cable—choke ..	J2	Gear—timing—camshaft ..	B2	Pedal—accelerator ..	J2
Cable—hand brake ..	AE2	Glass—backlight ..	AV2	Pedal—brake and clutch ..	S2
Cable—heater ..	BB2	Glass—door window ..	AT2	Pinion—differential ..	X2
Cable—ignition ..	K2	Glass—windscreen ..	AV2	Pinion—speedometer ..	V2
Cable—speedometer ..	AM2	Grille—radiator ..	AW2	Pipe—brake ..	AD2
Camshaft ..	B2	H		Pipe—clutch ..	S2
Cap—fuel tank ..	M2	Handle—boot lid ..	AS2	Pipe—exhaust ..	H2/6
Cap—radiator ..	L2	Handle—door ..	AT4	Pipe—fuel ..	M2
Carburetter ..	P2	Handle—regulator ..	AT2	Pipe—oil pressure ..	AM2
Carpets ..	AY2	Head—cylinder ..	A2	Piston—engine ..	A2
Case—differential ..	X2	Heater ..	BB2	Plate—brake ..	Z2
Case—transmission ..	T2	Hinge—bonnet ..	AR2	Plate—clutch ..	R2
Chain—timing ..	B2	Hinge—boot ..	AS2	Plugs ..	AZ2
Chamber and piston ..	P2	Hinge—door ..	AT2	Prop—bonnet ..	AR2
Chamber—float ..	P2	Horn ..	AH2	Pulley—alternator ..	AG8
Channel—door glass ..	AT2	Hose—brake ..	AD2	Pulley—crankshaft ..	G2
Cleaner—air ..	Q2	Hose—demister ..	BC2	Pulley—dynamo ..	G2
Clutch ..	R2	Hose—heater ..	BB2	Pulley—water pump ..	G2
Coil—ignition ..	K2	Hose—oil separator ..	D2	Pump—fuel ..	N2
Connecting—rod ..	B2	Hose—radiator ..	L2	Pump—oil ..	E2
Cooler—oil ..	F2	Housing—flywheel ..	R2	Pump—water ..	G2
Cover—battery ..	AG6	Housing—remote control ..	W2		
Cover—clutch ..	R2				
Cover—end ..	B2				
Cover—timing ..	B2				
Cover—valve rocker ..	C2				
Crankshaft ..	B2				
Cylinder—brake master ..	S2				

ALPHABETICAL INDEX—continued

Description	Page No.	Description	Page No.	Description	Page No.
R		W			
Rack and pinion—steering ..	AA2	Wheelbrace	BD2		
Radiator	L2	Wheel—road	AN2		
Regulator—window	AT4	Wheel—steering	AA2		
Rod—connecting	B2	Windows	AT2		
Rod—engine steady	H4	Windscreen	AV2		
Rod—oil dipper	E2	Windscreen washer	AK2		
Rod—tie—steering	AB2	Windscreen wiper	AK2		
		Wings	AQ2		
S					
Seal—boot	AS2				
Seal—bonnet	AR2				
Seal—door	AT2				
Seal—side panel	AQ2				
Seats	BA2				
Separator—oil	D2				
Servo unit	AF2				
Shaft—drive	AC2				
Shaft—1st motion	V4				
Shoe—brake	Z2				
Starter	A4				
Strainer—oil	T2				
Sub-frame	AP2				
Switch—door	AH2				
Switch—direction indicator ..	AH2				
Switch—heater	BB2				
Switch—heated back-light ..	AM2				
S					
Switch—ignition	AM2				
Switch—lighting	AM2				
Switch—panel light	AM2				
Switch—parking	AK2				
Switch—reverse light	AH2				
Switch—starter	A4				
Switch—stoplight	AD2				
Switch—wiper	AM2				
T					
Tank—fuel	M2				
Thermostat	C2				
Transmission	V2, V4				
Transmitter—thermal	AM2				
Thrower—oil	B2				
Tools	BD2				
U					
Unit—calliper	Z2				
Unit—flasher	AH2				
Unit—fuel tank	M2				
Unit—light	AJ2				
Unit—servo	AF2				
Unit—vacuum	K2				
V					
Vacuum unit	K2				
Valance—wing	AQ2				
Valve—inlet—exhaust	C2				
Valve—oil release	E2				
Valve—pressure reducing ..	AD2				
Vent—air	BC2				
Ventilator—door	AT2				
Visor—sun	AY2				